



High Power Polarization Maintaining Isolator (GK-HPMI Series)

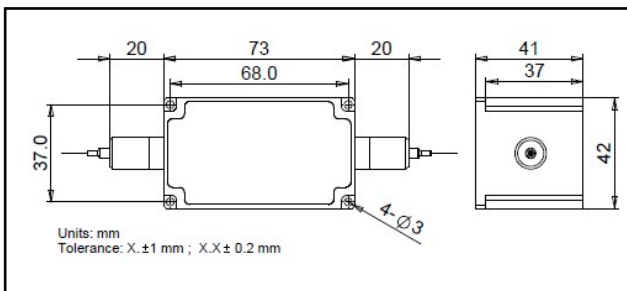
● Description

The 1030 nm High Power Polarization Maintaining Isolator is characterized with low insertion loss, high isolation, high power handling, high return loss, excellent environmental stability and reliability. It is ideal for fiber laser and instrumentation applications.

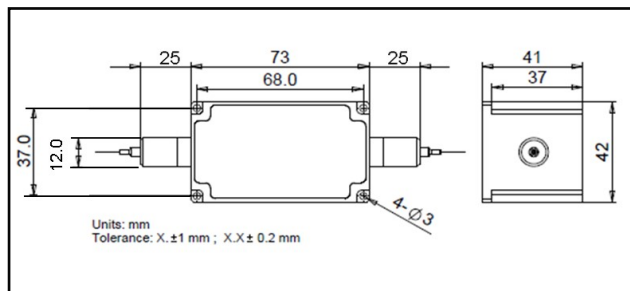
● Specifications

Parameter	Unit	Value
Center Wavelength (λ_c)	nm	1030
Operating Wavelength Range	nm	$\lambda_c \pm 10$
Typ. Peak Isolation	dB	30
Min. Isolation, λ_c , 23 °C, All Polarization State	dB	25
Typ. Insertion Loss, 23 °C	dB	0.8
Max. Insertion Loss, 23 °C	dB	1
Min. Return Loss (Input/Output)	dB	45/45
Min. Extinction Ratio	dB	20
Max. Average Optical Power	W	10 20
Max. Peak Power for ns Pulse	kW	10
Max. Tensile Load	N	5
Fiber Type	-	PM 980 Panda Fiber
Operating Temperature	°C	+ 10 to + 50
Storage Temperature	°C	0 to + 60

● Package Dimensions



Type A



Type B

● Ordering Information

GK-HPMI-①-②-③-④-⑤-⑥-⑦-⑧-⑨

①: Wavelength

03 - 1030 nm

SS - Specify

②: Handling Power

20 - 20 W

10 - 10 W

SS - Specify

③: Tap Ratio

0.1 - 1/999 05 - 5/95

01 - 1/99 10 - 10/90

02 - 2/98 SS - Specify

④: Connector Type

N - None

⑤: Fiber Jacket

B - 250 μ m Bare Fiber

L - 900 μ m Loose Tube

S - Specify

⑥: Fiber Length

Q - 0.75 m

S - Specify

⑦: Working Axis

F - Fast Axis Block

B - Both Axis Working

⑧: Fiber Type for I&O

1 - PM 980 Fiber

2 - Nufern FUD-3460

S - Specify

⑨: Power Type

P - Pulse Application

C - Continuous Wave