



High Power Polarization Maintaining Isolator (GK-HPMI Series)

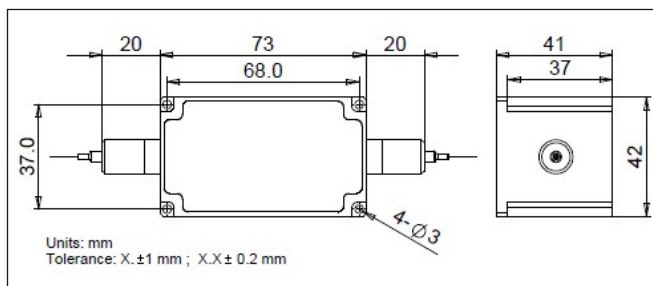
● Description

The 1030 nm High Power Polarization Maintaining Isolator is characterized with low insertion loss, high isolation, high power handling, high return loss, excellent environmental stability and reliability. It is ideal for fiber laser and instrumentation applications.

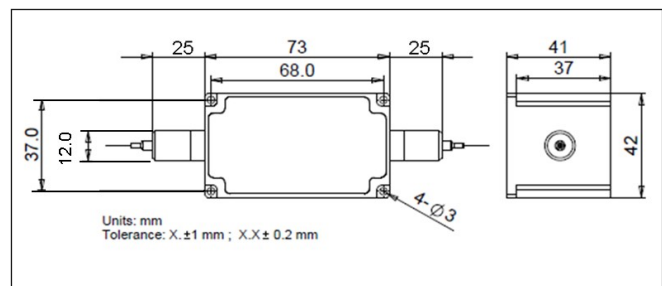
● Specifications

| Parameter | Unit | Value |
|---|------|-----------------------|
| Center Wavelength (λ_c) | nm | 1030 |
| Operating Wavelength Range | nm | $\lambda_c \pm 10$ |
| Typ. Peak Isolation | dB | 30 |
| Min. Isolation, λ_c , 23 °C, All Polarization State | dB | 25 |
| Typ. Insertion Loss, 23 °C | dB | 0.8 |
| Max. Insertion Loss, 23 °C | dB | 1 |
| Min. Return Loss (Input/Output) | dB | 45/45 |
| Min. Extinction Ratio | dB | 20 |
| Max. Average Optical Power | W | Type A: 10 Type B: 20 |
| Max. Peak Power for ns Pulse | kW | 10 |
| Max. Tensile Load | N | 5 |
| Fiber Type | - | PM 980 Panda Fiber |
| Operating Temperature | °C | + 10 to + 50 |
| Storage Temperature | °C | 0 to + 60 |

● Package Dimensions



Type A



Type B

● Ordering Information

GK-HPMI-①-②-③-④-⑤-⑥-⑦-⑧-⑨

①: Wavelength

03 - 1030 nm

SS - Specify

②: Package Type

A - Type A

B - Type B

③: Handling Power

10 - 10 W

20 - 20 W

SS - Specify

④: Connector Type

N - None

⑤: Fiber Jacket

B - 250 μ m Bare Fiber

L - 900 μ m Loose Tube

S - Specify

⑥: Fiber Length

Q - 0.75 m

S - Specify

⑦: Working Axis

F - Fast Axis Block

B - Both Axis Working

⑧: Fiber Type

1 - PM 980 Panda Fiber

2 - Nufern FUD-3460

S - Specify

⑨: Power Type

P - Pulse Application

C - Continuous Wave