

High Power Polarization Insensitive Isolator (GK-HI Series)

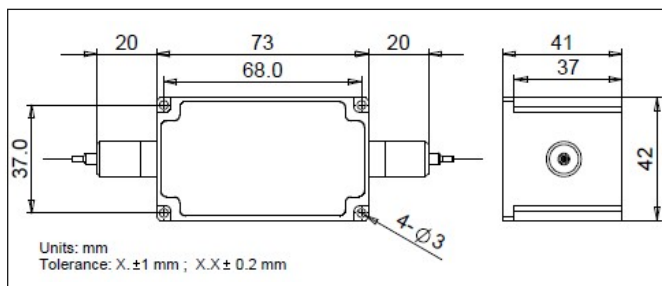
● Description

The 1030 nm High Power Polarization Insensitive Isolator is characterized with low insertion loss, high isolation, high power handling, high return loss, excellent environmental stability and reliability. It is ideal for fiber laser and instrumentation applications.

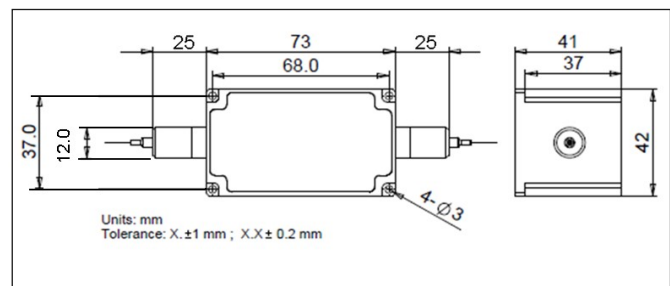
● Specifications

Parameter	Unit	Type A	Type B
Center Wavelength (λ_c)	nm	1030	
Operating Wavelength Range	nm	$\lambda_c \pm 10$	
Typ. Peak Isolation	dB	30	
Min. Isolation, λ_c , 23 °C, All Polarization States	dB	25	
Typ. Insertion Loss, 23 °C	dB	0.8	
Max. Insertion Loss, 23 °C	dB	1	
Max. IL Output To Reflection (MMF), (Output to MMF)	dB	None	1
Min. Return Loss (Input/Output)	dB	50/50	
Max. Polarization Dependent Loss	dB	0.2	
Max. Average Optical Power	W	10	20
Max. Peak Power For ns Pulse	kW	10	
Max. Tensile Load	N	5	
Fiber Type	-	HI 1060 Fiber	
MMF Fiber Type	-	None	MMF-105/125
Operating Temperature	°C	+ 10 to + 50	
Storage Temperature	°C	0 to + 60	

● Package Dimensions



Type A



Type B

● Ordering Information

GK-HI-①-②-③-④-⑤-⑥-⑦-⑧

①: Wavelength

03 - 1030 nm

SS - Specify

②: Package Type

A - Type A

B - Type B

③: Handling Power

03 - 3 W

10 - 10 W

20 - 20 W

SS - Specify

④: Connector Type

N - None

⑤: Fiber Jacket

B - 250 μ m Bare Fiber

L - 900 μ m Loose Tube

S - Specify

⑥: Fiber Length

1 - 1.0 m

S - Specify

⑦: Power Type

P - Pulse Application

C - Continuous Wave

⑧: Fiber Type

1 - HI 1060 Fiber

2 - Nufern FUD-3584 Fiber

3 - Nufern LMA-GDF-20/130-M

S - Specify