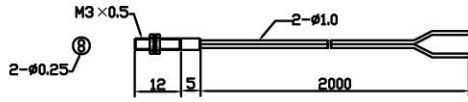


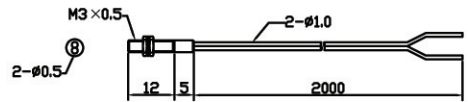
TX-RA/A-320
Free Cut

Fiber material	Plastic
Fiber diameter	$\begin{matrix} \text{D} & \phi 1.0 \\ \text{d} & \phi 0.25 \end{matrix}$
Operate temp.	-55° C→+70° C
Min.bending radius	R10
Sensing distance	5mm



TX-RB/B-320
Free Cut

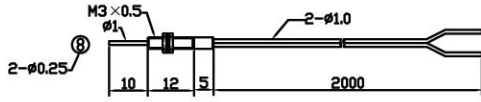
Fiber material	Plastic
Fiber diameter	$\begin{matrix} \text{D} & \phi 1.0 \\ \text{d} & \phi 0.5 \end{matrix}$
Operate temp.	-55° C→+70° C
Min.bending radius	R15
Sensing distance	25mm



TX-RA/A-320L
Free Cut



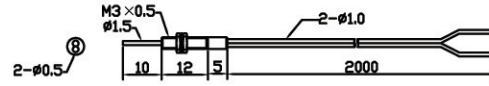
Fiber material	Plastic
Fiber diameter	$\begin{matrix} \text{D} & \phi 1.0 \\ \text{d} & \phi 0.25 \end{matrix}$
Operate temp.	-55° C→+70° C
Min.bending radius	R10
Sensing distance	5mm



TX-RB/B-320L
Free Cut

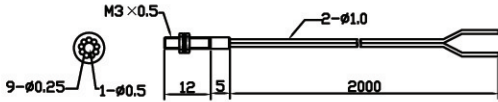


Fiber material	Plastic
Fiber diameter	$\begin{matrix} \text{D} & \phi 1.0 \\ \text{d} & \phi 0.5 \end{matrix}$
Operate temp.	-55° C→+70° C
Min.bending radius	R15
Sensing distance	25mm



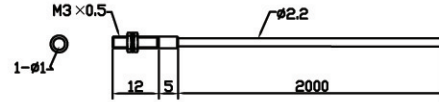
TX-RA/B-320
Free Cut

Fiber material	Plastic
Fiber diameter	$\begin{matrix} \text{D} & \phi 1.25\text{mm} \times 1 \\ & \phi 1.25\text{mm} \times 1 \\ \text{d} & \phi 0.5\text{mm} \times 1 \\ & \phi 0.25\text{mm} \times 9 \end{matrix}$
Operate temp.	-55° C→+70° C
Min.bending radius	R15
Sensing distance	30mm

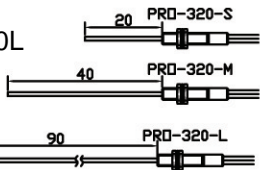


TX-TD-320
Free Cut

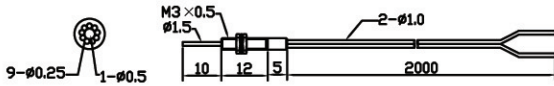
Fiber material	Plastic
Fiber diameter	$\begin{matrix} \text{D} & \phi 2.2 \\ \text{d} & \phi 1.0 \end{matrix}$
Operate temp.	-55° C→+70° C
Min.bending radius	R25
Sensing distance	500mm



TX-RA/B-320L
Free Cut



Fiber material	Plastic
Fiber diameter	$\begin{matrix} \text{D} & \phi 1.25\text{mm} \times 1 \\ & \phi 1.25\text{mm} \times 1 \\ \text{d} & \phi 0.5\text{mm} \times 1 \\ & \phi 0.25\text{mm} \times 9 \end{matrix}$
Operate temp.	-55° C→+70° C
Min.bending radius	R15
Sensing distance	30mm



TX-TB-320
Free Cut

Fiber material	Plastic
Fiber diameter	$\begin{matrix} \text{D} & \phi 1.0 \\ \text{d} & \phi 0.5 \end{matrix}$
Operate temp.	-55° C→+70° C
Min.bending radius	R15
Sensing distance	130mm

