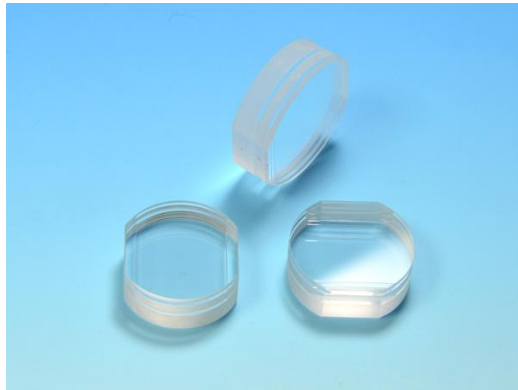
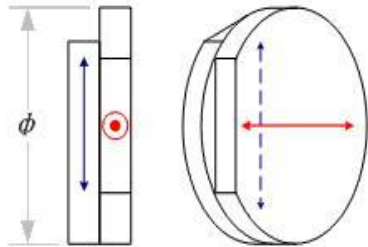


## Achromatic Wave Plates



材料:	Birefringent crystals
直径公差:	+0.0/-0.2mm
波前畸变:	$\lambda/4$ @632.8nm (for air spaced type)
相位延迟精度:	$\lambda/100$
平行度:	<10 arc second (for cemented type)
光洁度:	40/20 scratch and dig
有效孔径:	>90% central area
标准类型:	quarter-wave ( $\lambda/4$ ), half-wave ( $\lambda/2$ )
标准波长:	450-650nm 550-750nm 650-1100nm 900-2100nm
镀膜:	Uncoated for standard, AR coating available

*Note: Other sizes, wavelength are available upon request.*