

Crime Out-of-Reach Scene Detecting & Extracing System

OR-GGW1000

Introduction

The system is professional designed for trace evidence detecting or Trace DNA evidence sampling and used in hard-reach, dangerous place. For example, window edge of high building, water baffle, or climbing pillar etc in which required detection.

The system integrates wide-angle camera and forensic light source to detect and capture suspicious traces.

Specification

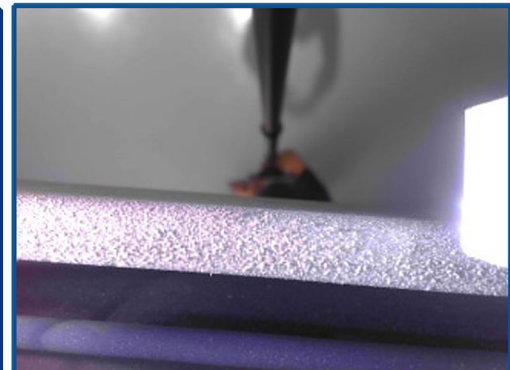
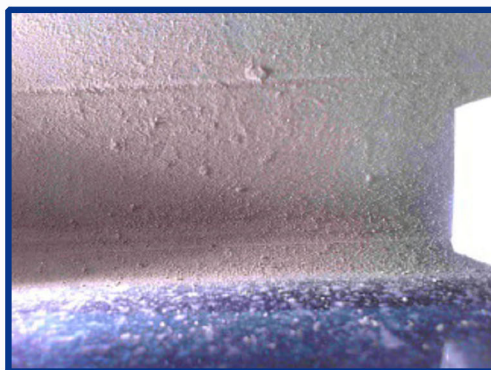
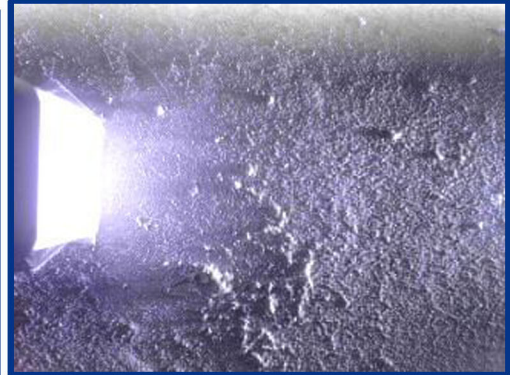
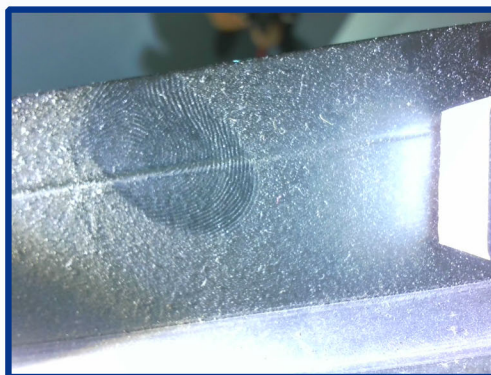
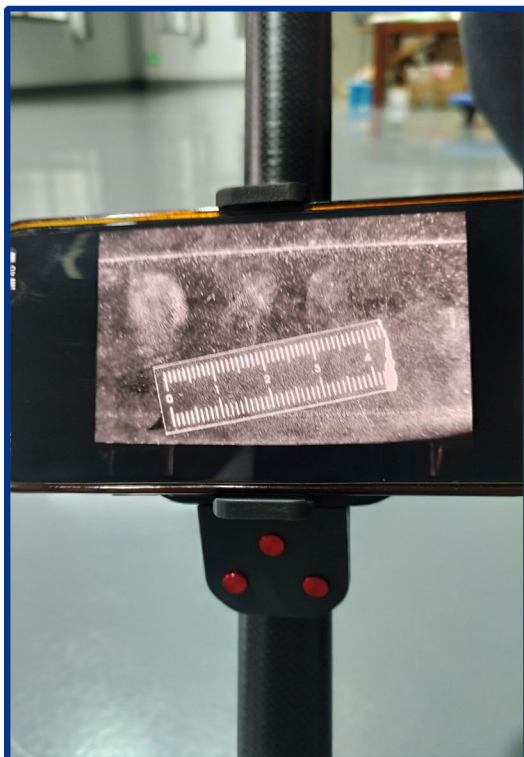
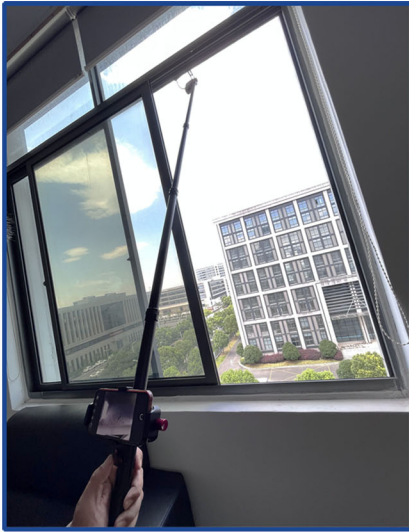
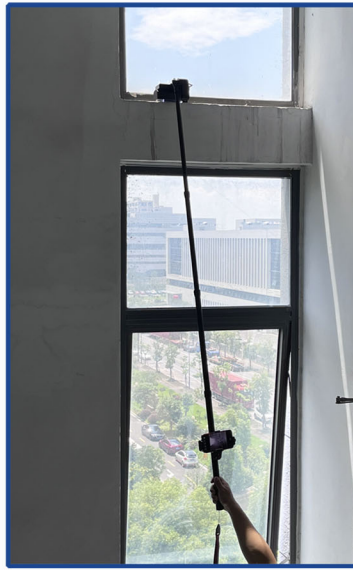
- 1.Total length: 1.75m Fold length: 0.59m
- 2.Lens view field: 4.5*6cm
- 3.Electrical control detect angle : -110° to 110°
- 4.Two forensic light source available: illuminating lights, oblique lighting source
- 5.Trace DNA sampling stick area: 15*30
- 6.Mobile phone holder available and removable
- 7.Camera wireless control, video wireless transmission





www.lightmobile.com

Hangzhou Hengli Electronic Technology Co., Ltd.
No. 4 building, Dinglan Rd 118th, Jianggan District,
Hangzhou City, Zhejiang Province, China
Tel: 86-57186987719 Fax: 86-57186431401
Email: hzhl@lightmobile.com



United Social Credit Code(Business Licence): 91330104736016531K