

[Home](#) > [Product](#) > [CSI Search Light](#) > [CSI High Power Uniform Detection Light OR-GYG48B](#)

Product

[Forensic Touch DNA](#)[Forensic Lab Equipment](#)[Forensic Laser System](#)[Multi-band Lights](#)[Fingerprint Photography](#)[Footwear Impression Light](#)[Crime Scene Lights](#)[CSI Search Light](#)[Footwear Impression Light](#)[Police Illumination](#)[Light Tower](#)[Applications](#)[Tools for crime scene investigation](#)

Contact US

MP: 86-159-5714-4852

Tel: 86-571-86987719

Fax: 86-571-86431401

E-mail: hzh1@lightmobile.com

CSI High Power Uniform Detection Light OR-GYG48B



Product details

It adopts high brightness LED lamp and projector type combined optical lens, which enables it with uniform projection and ultra-wide lighting range. Especially suitable for: the workplaces that need uniform lighting or wide lighting range, and can be used for some special purposes, such as the detection of footprints and traces as well as searching ambient environment.

FEATURES:

Material: groups of optical lens, Cree LED light source, aluminum alloy housing

Projection features: The spot light has a clear circular edge, a wide light range and no shading lines.

Switch: Push-type button, steps (off- weak light- strong light- flash) shifting within 0.5 second, instant startup and switch

Waterproof: Good overall sealing, enclosed type charging hole

Appearance: Round and hand-held, with switches and charging hole on the back

Circuit features: The brightness of control light of the microcomputer chip is always constant, and battery charging and discharging is automatically controlled by the microcomputer.

Appearance: No scratches or burrs on the housing and no dust or dirt on lens

SPECIFICATION:

Charging voltage: 16.8V, charging current: 1 A

Capacity of lithium-ion battery pack: $\geq 6,000\text{mAh}$

LED Power: 30W

Continuous lighting time of strong light: ≥ 3 hrs

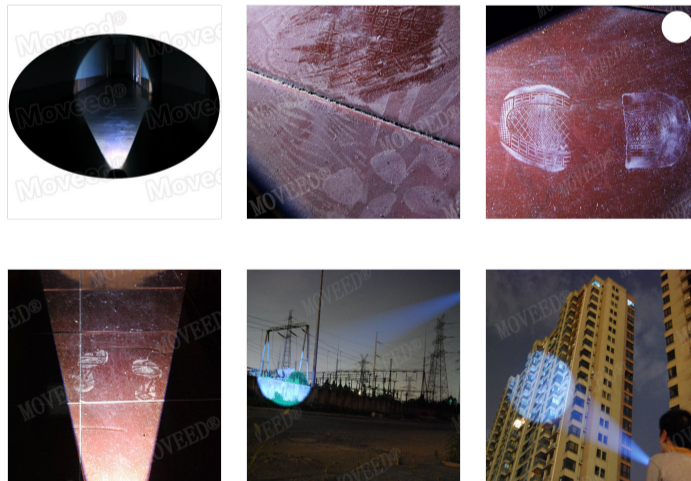
Continuous lighting time of working light: ≥ 10 hrs

Light spot diameter (at 2 meters): ≤ 790 mm

Lighting uniformity at 1 m: $\geq 80\%$

Recruitment agent, interested in contact email: hzh1@lightmobile.com

Effect chart



Related products

[Footwear Impression](#)[Footwear Impression](#)[Crime Scene Wide](#)[Crime Scene Wide](#)[Police Uniform](#)