

LocateDNA

FOR CRIME SCENE & LABORATORY



“NEW Touch DNA sampling technique: Instantly reveal and enhance the visibility of TOUCH DNA for high-efficiency collection”



Forensic Portable Visualize TOUCH DNA Locating Device (**LocateDNA**)

LocateDNA offers a complete solution to search, reveal, and collect DNA evidence including Touch DNA, body fluids, and other traces using state of the art forensic search and detection tools. High-efficiency location of Touch DNA (epithelial cells) collection areas, and sampling of Touch DNA in a specific range; reveals and enhances the visibility of biological stains (semen, saliva, teeth, blood, etc.).

LocateDNA, is a small and compact handheld device that integrates multiple advanced optical technology features in a functional, portable, easy to use instrument, making the examiner's search for DNA evidence more efficient, and enhancing the investigator's ability to detect evidence.

KEY BENEFITS

■ Visualize Touch DNA – Multi-band Merged Technology

The major breakthrough in the LocateDNA Special Light Source is the perfect merging of forensic wavelengths working together to locate, reveal, and enhance Touch DNA in a collection area. No DNA reagents are required during collection, and there is no interference from external light. Visualizing and sampling in the range of gathering area is easy, with red-mark dot locating available. There is no damage to DNA evidence chain.

■ UV-Blue-Laser Illumination

LED UV, LED Blue, Laser Blue and speckle-free uniform white light to detect a wide range of evidence types: body fluids(semen, urine, saliva, etc.), fingerprints, bite mark, traces of physical evidence (fibers, hairs, glass, etc.).

■ Smartphone IOS System Interface

The compact LocateDNA device is optimized for mobile use and operation by investigators, which improves the efficiency of examinations, allowing performance of real-time visible examinations; videos and still images are available. **LocateDNA** device can quickly reveal the presence of evidence, store or export images and samples to a forensic laboratory.

POSSIBLE SOURCES OF DNA EVIDENCE

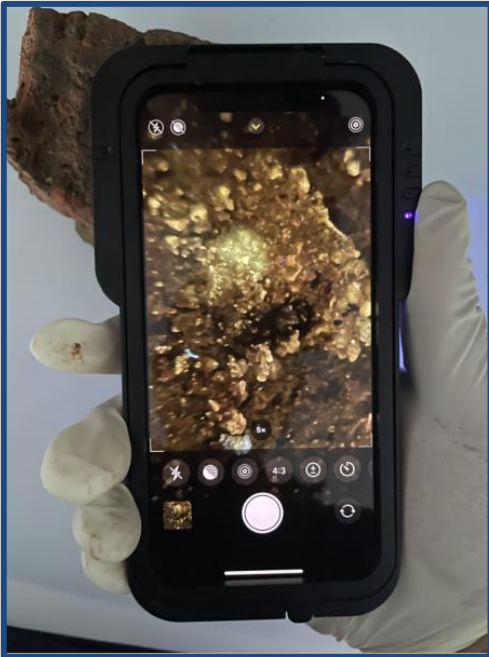
◆ General Searching

different kinds of physical materials such as window sills, wall surfaces, and solid rough surface material like bricks, letter paper, clothes, etc. at the crime scene.



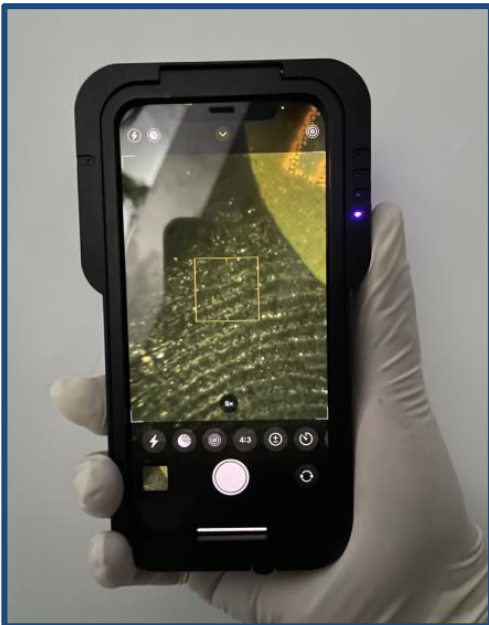
◆ **VISUALIZING TOUCH DNA**

revealing & sampling Touch DNA on the surface of doorknob, windows, gloves, clothes, bricks, plastic bags etc. that pepertrator may touched or handled.



● **VISUALIZING TOUCH DNA**

LocateDNA Special Light Source working on rough brick. Touched traces revealed.

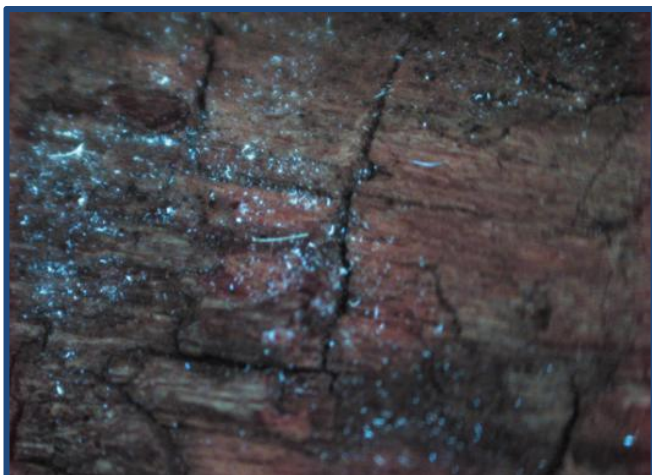


● **VISUALIZING TOUCH DNA**

LocateDNA Special Light Source working on wall surface. Print ridge

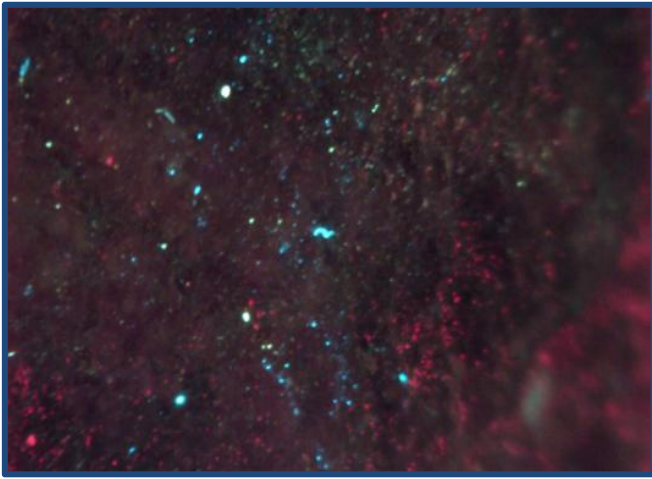
● **VISUALIZING TOUCH DNA**

LocateDNA Special Light Source working on metallic handle surface. Touch traces revealed.

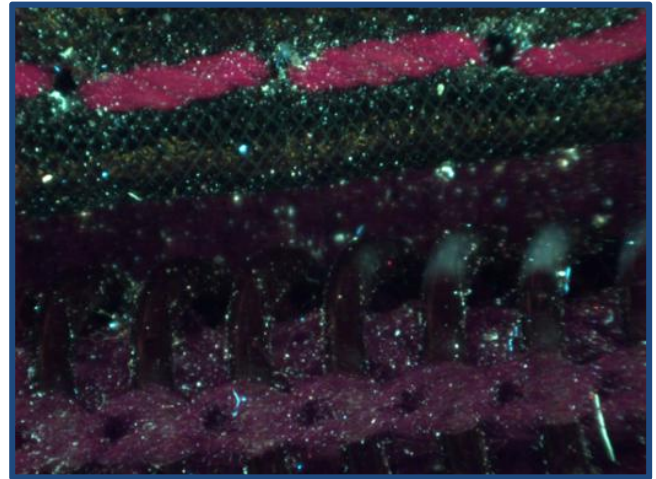


● **VISUALIZING TOUCH DNA**

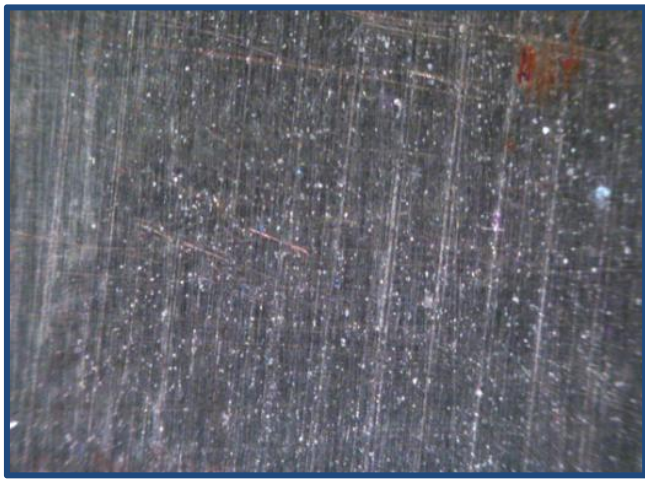
LocateDNA Special Light Source working on **WOOD MATERIAL.**



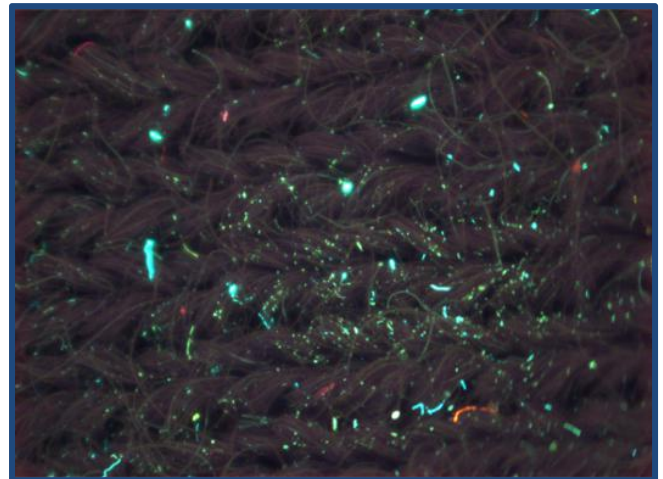
VISUALIZEINGTOUCH DNA
LocateDNA Special Light Source working
on **STONE SURFACE**



VISUALIZING TOUCH DNA
LocateDNA Special Light Source working
on **ZIPPER SURROUND**



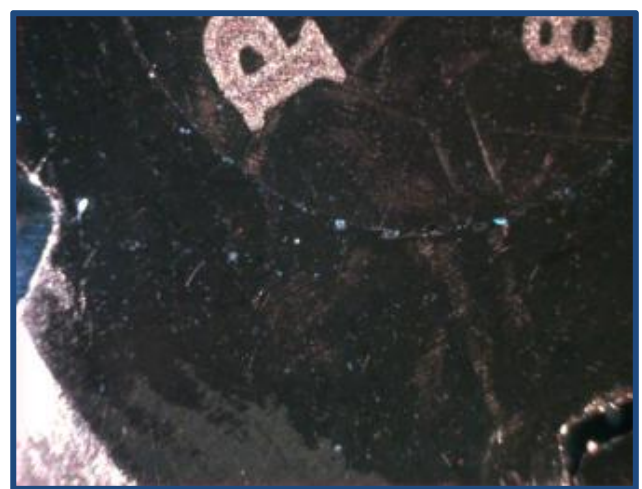
VISUALIZING TOUCH DNA
LocateDNA Special Light Source working
on **WOOD TABLE** surface.



VISUALIZE TOUCH DNA
LocateDNA Special Light Source working on
DARK COLOR CLOTH surface



VISUALIZING TOUCH DNA
LocateDNA Special Light Source
4 **STAINLESS STEEL HANDLE** surface.

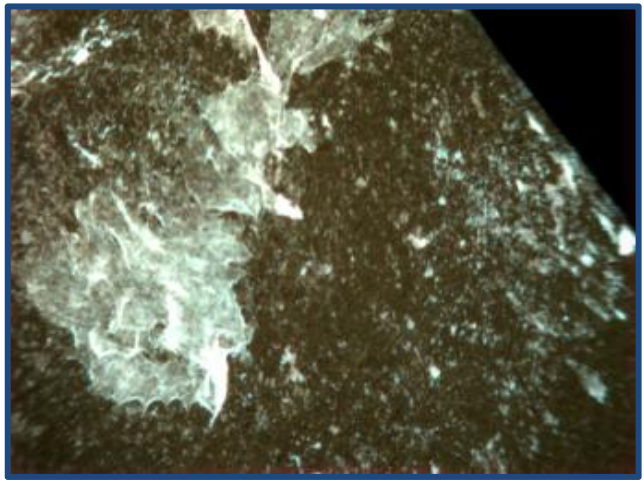


VISUALIZING TOUCH DNA
LocateDNA Special Light Source
working on **METALLIC TOOL** surface.

◆ **ENHANCING BIOLOGICAL FLUIDS**

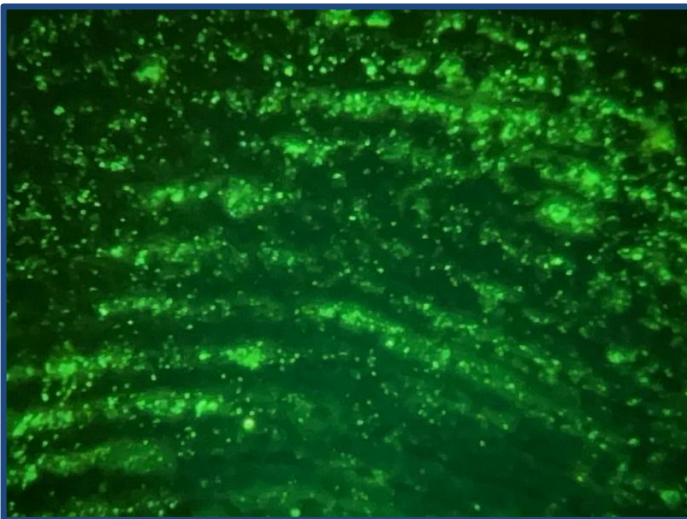


● **ENHANCEMENT OF BIOLOGICAL FLUIDS**
LocateDNA Special Light Source working on BLOOD STAIN of CLOTH.

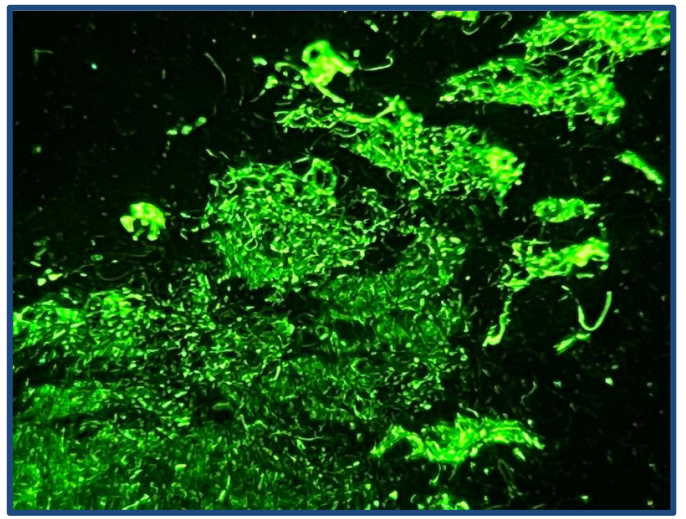


● **ENHANCEMENT OF BIOLOGICAL FLUIDS**
LocateDNA Special Light Source working on SALIVA STAIN of CIGARETTE BUTT

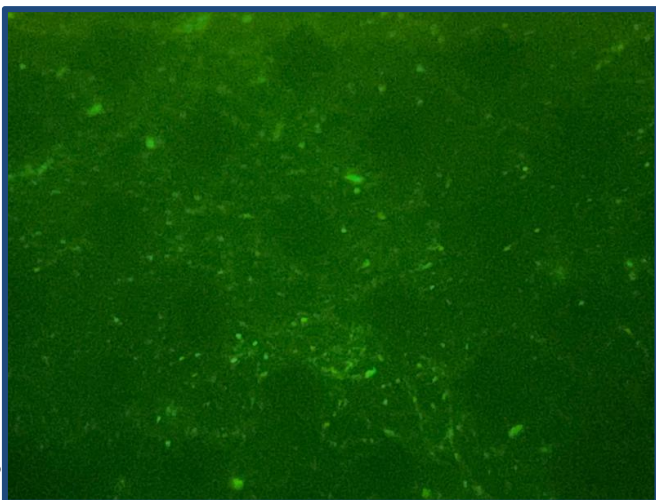
◆ **LASER LIGHT SOURCE EFFECTS**



● **ENHANCEMENT OF BIOLOGICAL EVIDENCE**
GREEN LASER Light working on TOUCH DNA on the wall surface



● **ENHANCEMENT OF BIOLOGICAL FLUIDS**
GREEN LASER Light working on SEMEN STAIN on dark color cloth.



● **ENHANCEMENT OF BIOLOGICAL FLUIDS**
GREEN LASER Light working on SALIVA on mask.