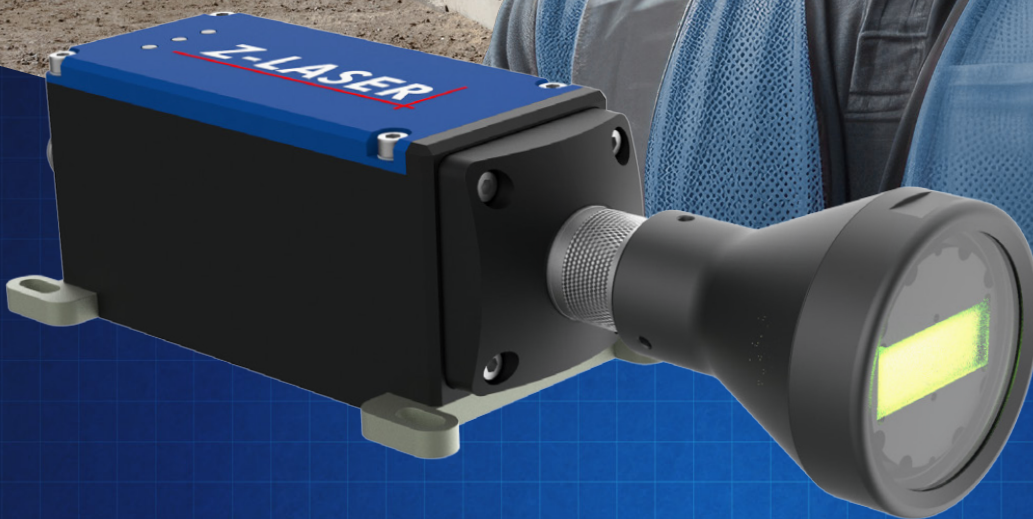


Z-LASER

An Exaktera Company



The brightest eye-safe laser in the world.

Z-LASER ZQ1-MagicLine: Optical output power 600 mW
and laser class 2M - for optimum safety and performance.

www.z-laser.com/ZQ1-MagicLine

ZQ1-MagicLine

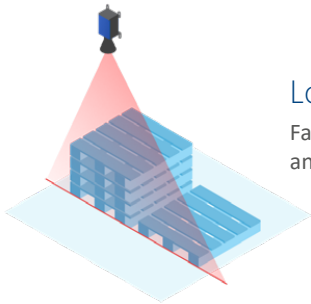
The new benchmark
in performance and safety.



The ZQ1-MagicLine from Z-LASER is the world's brightest line laser in its class. With outstanding outdoor visibility and certified eye safety, it combines innovation with the first-class workmanship of industrial lasers for the highest demands.

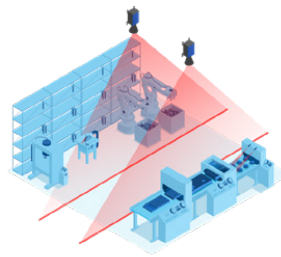
Proven connection options, an aperture angle of 70° and its robust design for dust and water protection according to IP67 make the Z-LASER ZQ1-MagicLine the ideal solution for a wide range of industrial applications - even in demanding outdoor areas with difficult lighting conditions.

The Z-LASER ZQ1-MagicLine is the ideal laser solution for demanding industrial applications.



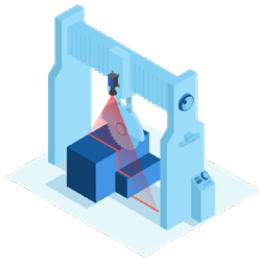
Logistics

Facilitates the marking of storage areas and the positioning of pallets.



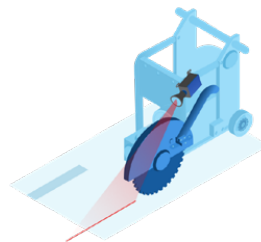
Safety areas

Precise marking of safety zones for greater safety in logistics.



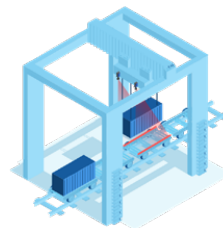
Bridge saws

Clean cuts with maximum precision.



Concrete saws

Precise sawing of road concrete for efficient and safe work.



Positioning of containers

Precise positioning of cranes when placing containers.



The world's brightest line laser with 600 mW.



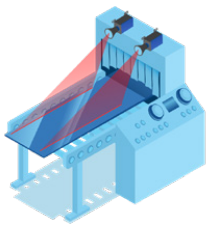
2M laser class for certified eye safety.



520 nm wavelength for excellent visibility.

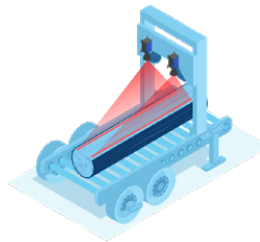


IP67-certified dust & water protection.



Sawmills

Optimizes precise wood and metal cutting - for optimized productivity while reducing material waste.



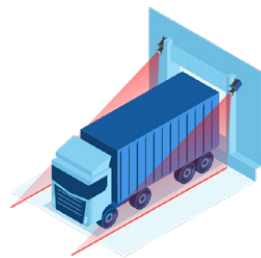
Mobile sawmills

Precise cuts on site for more efficient wood processing - right where the wood is.



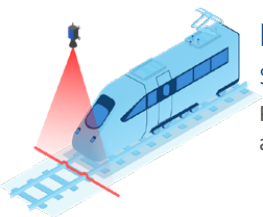
Loading and unloading aid for trucks

Reliable positioning aid for fast loading and unloading.



Marking of truck parking spaces

Effective marking of truck parking spaces even in the dark and in snow.



Brake and stop markings for trains, suburban trains, and streetcars

Precise stop markings for trains, suburban trains, and streetcars.



Z-LASER

An Exaktera Company

Innovative light for better results

Providing visual guidance to people and machines with laser solutions

Z-LASER has been developing and producing innovative, high-quality laser solutions since 1985.

By providing visual guidance and orientation for people as well as machines, our lasers contribute to optimizing your production processes, ensuring quality, and to using resources carefully.



German engineering since 1985

Over 120 employees develop and manufacture completely in Freiburg, Germany.



Innovators by conviction

25 % of our workforce is involved in R&D.



Rooted locally, at home globally

Sales offices and over 60 distributors worldwide.



The right solution for every challenge

Developed in close customer exchange, our products adapt perfectly to your requirements.



Modular products for efficient processes

Modularity means less maintenance, optimized performance and better scalability.



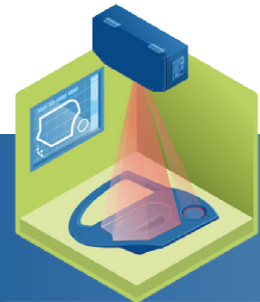
Positioning Laser

Benefit from increased precision for more efficient processes with lower material consumption.



Laser for Machine Vision

Automate your optical quality control with structured laser light.



Laser Projectors

Replace mechanical templates with laser projections and save time, money and material.

Contact



Contact us.
We would be happy to advise you!

www.z-laser.com/contact

Headquarters

Z-LASER GmbH
Merzhauser Str. 134
79100 Freiburg
Germany

Tel: +49 761 296 44-44
E-Mail: info@z-laser.de
Web: www.z-laser.com

Salesoffice

Z-LASER Italia Srl.
Via Gran Paradiso, 4
20861 Brugherio MB
Italy

Tel: +39 039 287 1860
E-Mail: info@z-laser.com
Web: www.z-laser.com