

HC5100

Standard transmission light box

To provide a better lighting environment for film and television, camera lens evaluation system

Product characteristics

01

Professional LED chip

The standard transmission light box HC5100 uses a professional-grade LED chip, accurately calculates the chip arrangement, and uses direct current to drive strobe free.

02

Two dimming knobs

Dimming range 0-11000Lx, divided into thick and fine two dimming knobs, dimming more accurate.

03

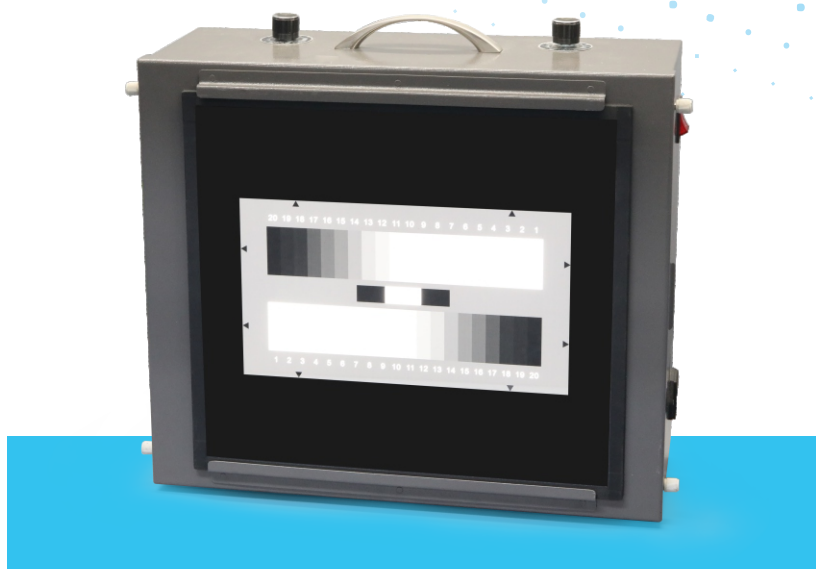
The unique design subverts the traditional transmission light box

Transmission light box is a light source device used for the evaluation and adjustment of camera and static camera. It can be seen that there is no flickering image due to the high frequency fluorescent lamp lighting method. Provide standard light source test environment, with various uses of transmission glass test card use, through the analysis of image processing software to obtain test results, professional, simple.

04

Dc electric drive no stroboscopic, long service life

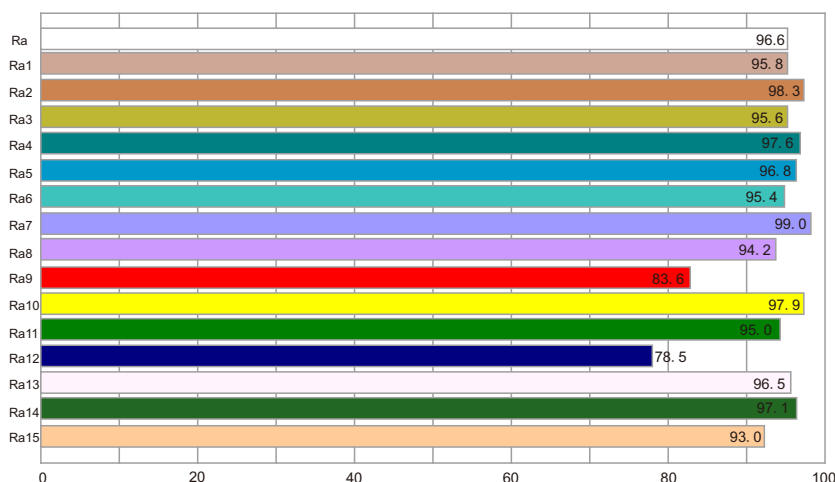
The luminous efficiency is 60% higher than that of traditional fluorescent lamps, and the environmental protection does not contain mercury.



05

Illuminance uniformity 95%, color rendering index CRI>95

The color rendering index of the LED lamp is the parameter of the restoration ability of the LED lamp to the color, which is mainly used to define the difference between the color rendering of different LED light sources. The lower the color rendering index, the more distorted the color is seen by the naked eye, the higher the color rendering index, the clearer.



ISO9001



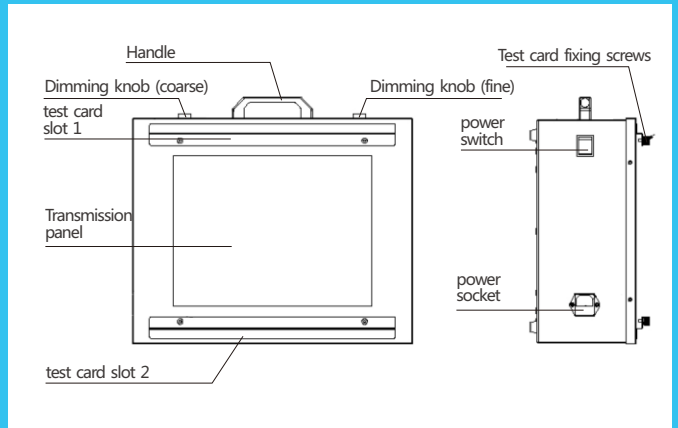
Product introduction

Standard transmission light box HC5100 adopts professional LED chip, precise calculation chip arrangement, the use of direct current drive without strobe, long service life, for film and television, camera lens evaluation system to provide a better professional lighting environment.



Product structure

The standard transmission light box HC5100 is mainly composed of: box, handle, test card slot, transmission panel, dimming knob (coarse and fine adjustment) test card fixing screw, power socket, power switch and other components.



Application industry

Transmission light box is a light source device used for the evaluation and adjustment of camera and static camera. It can be seen that there is no flickering image due to the high frequency fluorescent lamp lighting method. Provide standard light source test environment, with various uses of transmission glass test card use, through the analysis of image processing software to obtain test results, professional, simple. The standard transmission light box HC5100 is widely used in digital cameras, camera phones, video recorders, security cameras, car cameras, LENS lens adjustment and testing of penetrating light source devices.



• camera



• Mobile phone camera



• Security camera



• Lens



• camera

Product parameter

Item	Argument
Illuminance adjustable, dimming range	0-11000Lx
color temperature	5100±100K,Duv±0.002
Light box dimensions	370*325*165(mm)
Light box transmission surface dimensions	250*190mm(L*H)
Test card slot size	360*8*285mm(L*W*H)
Use environment	0-45°C, relative humidity below 85% (non-condensing)
Input voltage	AC110-240V 2.2A 50/60Hz, power 50W
Net weight	6Kg