

高性能/高精度/自动定位/简易操控



VESHAY LASER



线路板激光打标机

PCB LASER MARKING MACHINE

PCB激光打标机

PCB LASER MARKING MACHINE



VIPIN 系列 / Vipin series

◆ 激光头: 进口激光器高稳定、寿命长

Laser Head: Imported laser with high stability and long life

◆ 智能化系统: 可以MES定制开发

Intelligent System: Support MES development.

◆ 高精度定位系统: 士0.02mm重复定位精度

High-Precision Positioning System: $\pm 0.02\text{mm}$ repeated positioning

◆ 净化系统(选装): 自动化高性能净化系统

Purification System (optional): Automated high-performance purification

◆ 智能相机系统: 智能CCD视觉定位

Intelligent Camera System: Intelligent CCD visual positioning.

◆ 控制系统: 基于视觉高精度定位系统开发

Control System: Developed based on a high-precision Vision Marking system from Vipin company.

全自动PCB激光标刻机主要应用于PCB表面自动标刻二维码、条码、字符、图案，可在白油、绿油、黑油等各种油墨以及面实现精密自动标刻。

Full-automatic PCB laser marking machine is mainly used for marking QR code, barcode, characters, different patterns on PCB with various kinds of ink, such as white, green, or black oil, and even on copper surface accurately.

可自动从MES获取指定信息（如批次、日期等），并自动生成二维码，通过PCB激光标刻机自动标刻在PCB表面，也可以作为生产流程中产品信息的管控。

It can acquire the data from MES automatically, such as batch number, date, and generate QR code; by lasering it on PCB so to control the product.

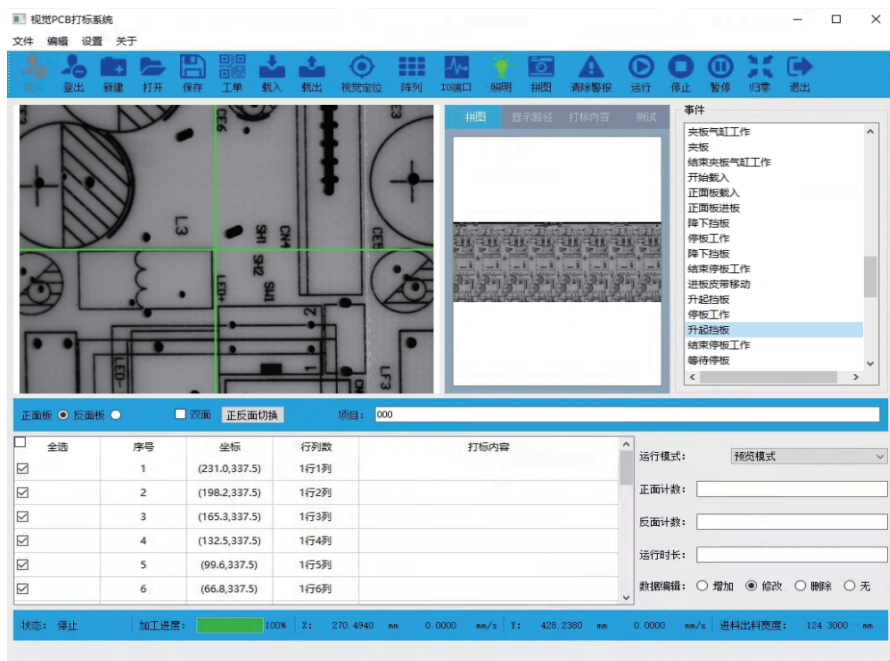
相比普通喷印方式，无耗材，更精细、环保无污染，免维护，PCB激光标刻机主要应用于印刷电路板生产型企业。

Compared with the traditional spray printing, PCB laser marking machine is more precision, no pollution, easy maintenance and without extra cost, it is applied widely in PCB industry.

PCB激光打标机

PCB LASER MARKING MACHINE

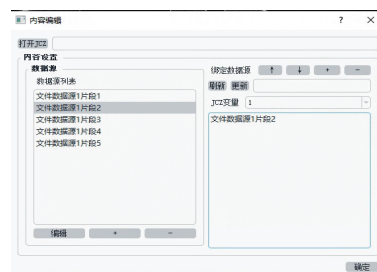
软件 Softer Ware Functions



软件界面
Software Interface



权限设置
Permission settings



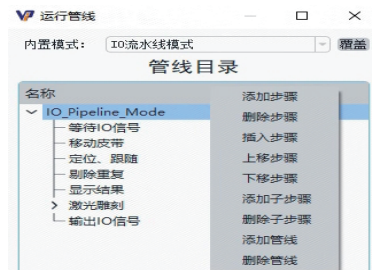
工单系统
Work Order System



MES 定制开发
MES Development



数据库管理
Database management



运动模式可编辑
Sports mode editable

硬件 Hardwares



紫外激光器
UV Laser



PCIE 打标卡
PCIE Marking Card



高清相机
HD Camera

PCB激光打标机

PCB LASER MARKING MACHINE

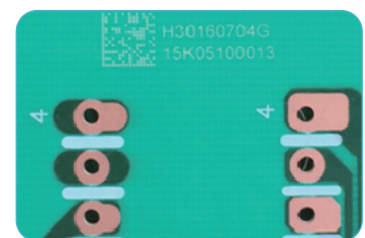
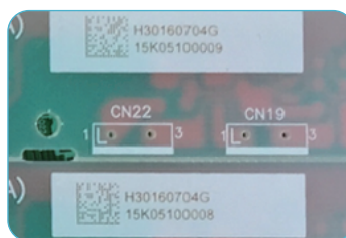
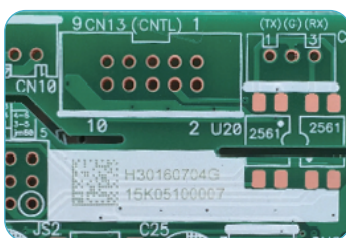
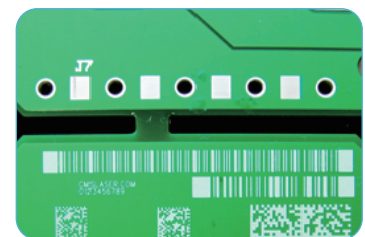
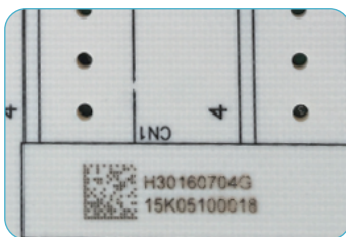
应用领域 Application Fields

用于在五金、塑料、电路板，以及补强钢片和屏蔽盖产品上标记一维码、二维码、文字等信息，并可以在标记完成后进行读取验证。

It is used for marking one-dimensional codes, two-dimensional codes, text, and other information on hardware, plastics, circuit boards, as well as reinforcing steel sheets and shielding cover products. It can also read and verify the marking after completion.

汽车  Automotive Industry	手机  Mobile Phones	电池板  Battery Panels	半导体  Semiconductors	家电  Home Appliances Industry
航天  Aerospace	户外电器  Outdoor Electronics	医疗器械  Medical Equipment	仪器仪表  Instruments and Meters	LED行业  LED Industry

应用场景 Appcation-Scenarios



PCB激光打标机

PCB LASER MARKING MACHINE

技术参数 Technical parameter

设备型号 Model No:	VIPin-4045AT
激光类型 Laser type:	紫外/绿光/二氧化碳 UV/Green/Carbon Dioxide
激光波长 Laser wave length:	355nm/532nm/10640nm
激光功率 Laser power:	5w/10w
激光冷却方式 Laser cooling method:	强制水冷/风冷 Forced water cooling/air cooling
激光直径 Laser size:	0.03mm
工作方式 Work method:	激光移动/ Laser movement
重复定位精度 Repeat positioning accuracy:	±0.2mm
工作台高度 Workable Height:	900 ±20mm 可调 Adjustable
条码最小刻印 Minimum Barcode Size:	1*1mm Mark
定位系统 Positioning system:	CCD+mark定位 / CCD + Mark positioning
控制系统 Control System:	PC+轴卡+伺服 / PC + Shaft Car+Servo
条码检测系统 Barcode detection system:	CCD在线读取检测 / CCD online detection
PCB最大尺寸 (mm) Maximum PCB size:	50*50-400*450mm
PCB允许变形量 PCB Allowed Deformation:	<3mm
PCB厚度 PCB Thickness:	0.5-4mm
PCB通过高度 PCB Pass height:	Up:35MM Down: 15mm
薄板防翘压着系统 Board fixing system:	有 / yes
轨道传送速度 Transition Speed:	0-3000mm/S
轨道传送方向 Transition Direction:	左至右/右至左 / Left->Right/Right -> Left
三段式导轨 + 内置翻板 3 breaks Railway and Built-in flap board:	无 /NO; 可选 Optional
轨道宽度调整 Track width adjustment:	自动调整 Automatic adjustment
刻印对象/种类 Marking Product classify:	文字、一维条形码、二维码、图像数据 Character、Barcode、QR code、Graphic Data
烟雾处理方式 Smoke Treatment Mode:	烟雾净化处理系统 Smoke Purification System
软件 Software:	自主研发, 服务可变更性更强 Independent R&D, Flexible service
软件界面 Software interface:	中文或英文界面 Chinese or English
防重刻功能 Poka-yoke function:	有 /Yes Available
坏板识别功能 Defective PCB Identify Function:	有 /Yes Available
条码数据来源 Barcode Database:	从MES获取, 或自动生成 Get Data from MES, or generate automatically
系统连接功能 System connection function:	可连接Shopfloor、MES、IMS等智能管理系统 Access to ShopFloor, MES, IMS system, and so on.
条码等级分析 Barcode Grade Analysis:	支持 Support
刻印角度 Engraving angle Marking Angle:	0-360°
输入电压 Input voltage:	AC220V/7A 50Hz
气压源 Air Supply:	5-7Kgf/cm ² Bg0.5-0.7MPa
环境要求 Environment Requirement:	0-40°C 35-85%RH
设备功率 Equipment Power:	1.5KW
设备尺寸(宽*高*深mm) Machine Size(width*high*deep):	1150mm*1310mm*1650mm
设备重量 Equipment weight:	约650KG / Approx 650KG



扫码查看
Scan code to view

东莞市维希尔科技有限公司

Dongguan Veshay Laser Technology Co., Ltd

TEL: 0769-22117201 FAX: 0769-22117202

Sales Manager: Effie Chang

WeChat/WhatsApp: +86 15322888701

Website: www.vipinforce.com.cn

Address: Room 1201, Unit 1, Building 16, No. 7 Science and Technology Avenue,
Houjie Town, Dongguan City, Guangdong Province, China