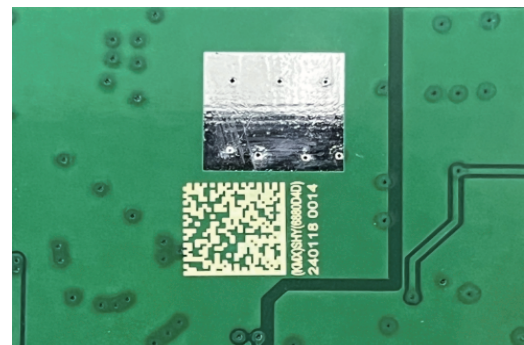
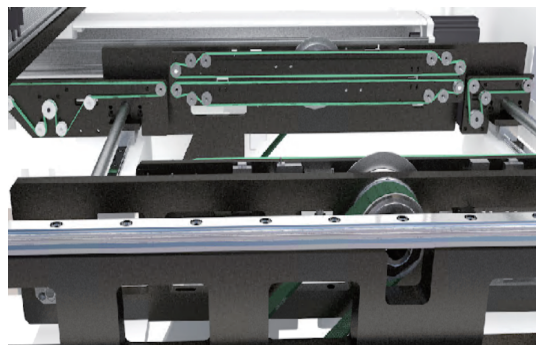


# VIPIN-4545AT

## 线路板激光打标机

PCB LASER MARKING MACHINE



东莞市维希尔科技有限公司

Dongguan Veshay Laser Technology Co., Ltd

# PCB激光打标机

## PCB LASER MARKING MACHINE



### VIPIN 系列 / Vipin series

◆ 激光头: 进口激光器高稳定、寿命长

Laser Head: Imported laser with high stability and long life

◆ 智能化系统: 可以MES定制开发

Intelligent System: Support MES development.

◆ 高精度定位系统: 士0.02mm重复定位精度

High-Precision Positioning System:  $\pm 0.02$ mm repeated positioning

◆ 净化系统(选装): 自动化高性能净化系统

Purification System (optional): Automated high-performance purification

◆ 智能相机系统: 智能CCD视觉定位

Intelligent Camera System: Intelligent CCD visual positioning.

◆ 控制系统: 基于视觉高精度定位系统开发

Control System: Developed based on a high-precision Vision Marking system from Vipin company.



全自动PCB激光标刻机主要应用于PCB表面自动标刻二维码、条码、字符、图案，可在白油、绿油、黑油等各种油墨以及面实现精密自动标刻。

Full-automatic PCB laser marking machine is mainly used for marking QR code, barcode, characters, different patterns on PCB with various kinds of ink, such as white, green, or black oil, and even on copper surface accurately.

可自动从MES获取指定信息（如批次、日期等），并自动生成二维码，通过PCB激光标刻机自动标刻在PCB表面，也可以作为生产流程中产品信息的管控。

It can acquire the data from MES automatically, such as batch number, date, and generate QR code; by lasering it on PCB so to control the product.

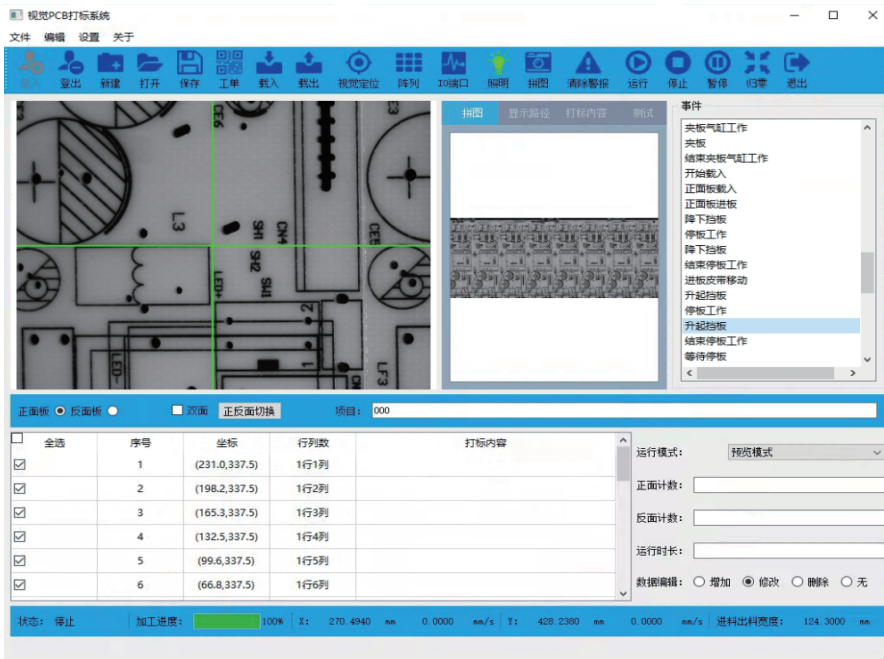
相比普通喷印方式，无耗材，更精细、环保无污染，免维护，PCB激光标刻机主要应用于印刷电路板生产型企业。

Compared with the traditional spray printing, PCB laser marking machine is more precision, no pollution, easy maintenance and without extra cost, it is applied widely in PCB industry.

# PCB激光打标机

# PCB LASER MARKING MACHINE

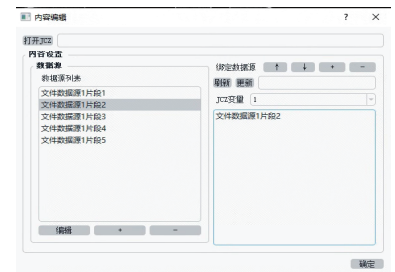
## 软件 Softer Ware Functions



软件界面  
Software Interface



权限设置  
Permission settings



工单系统  
Work Order System



MES 定制开发  
MES Development



数据库管理  
Database management



拼图功能  
Image stitching

## 激光器规格 Laser parameters

Laser Type	CO <sub>2</sub>	UV	GREEN	Fiber	MOPA
Laser wave length	10640nm	355nm	532nm	1064nm	1064nm
Laser Power	5w/10w/30w	3w/5w	5w/10w	20w/30w	20w/30w
Laser cooling method	Air cooling	Water cooling	Air cooling	Air cooling	Air cooling
Laser Class	Class 4	Class 4	Class 4	Class 4	Class 4

Model No	FSD-260A	FSD-3030A	VIPIN-4651AT	VIPIN-4545AT	VIPIN-4651DT
Laser type	CO <sub>2</sub> /Fiber/MOPA/UV/GR				
Work method	Laser Fixing	Laser Fixing	Laser Moving	Laser Moving	Laser Moving
Positioning system	Mechanical / CCD/Mark Positioning				
Repeat accuracy	±0.1mm	±0.1mm	±0.02mm	±0.02mm	±0.02mm
Workable Height	900 ±2 0mm	900 ±2 0mm	900 ±2 0mm	900 ±2 0mm	900 ±2 0mm
Maximum PCB size	260x260mm	300x300mm	460x510mm	450x450mm	460x510mm
Allowed Deformation	<3mm	<3mm	<3mm	<3mm	<3mm
PCB Thickness	0.5-5mm	0.5-5mm	0.5-5mm	0.5-5mm	0.5-5mm
PCB Pass height	UP:25mm Down:25mm				
Board fixing system	Support	Support	Support	Support	Support
Transition Speed	0-3000mm/S	0-3000mm/S	0-3000mm/S	0-3000mm/S	0-3000mm/S
Transition Direction	Leftt To Right/Right To Left				
Double-sided Marking	NO	NO/Optional	NO	Built-in flap	Simultaneously
Width adjustment	Manual	Manual	Electric	Electric	Electric
Barcode reading	CCD reading	CCD reading	CCD reading	CCD reading	CCD reading
Marking classify	Character、Barcode、QR code、Graphic Data				
Minimum Barcode Size	3.0*3.0mm	3.0*3.0mm	1.5*1.5mm	1.5*1.5mm	1.5*1.5mm
Marking Angle	0-360°	0-360°	0-360°	0-360°	0-360°
Barcode Grade Analysis	NO	NO	NO/Optional	NO/Optional	NO/Optional
Barcode Database	Get Data from MES, or generate automatically				
System connection function	Access to ShopFloor, MES, IMS system, and so on.				
Software interface	Chinese or English	Chinese or English	Chinese or English	Chinese or English	Chinese or English
Control System	PC + Shaft Car+Servo				
Cooling method	Forced water cooling/air cooling				
Poka-yoke function	Support	Support	Support	Support	Support
Smoke Treatment Mode	Smoke Purification System				
Bad board identification	NO	Support	Support	Support	Support
Input voltage	AC220V/7A 50Hz	AC220V/7A 50Hz	AC220V/7A 50Hz	AC220V/7A 50Hz	AC220V/7A 50Hz
Equipment Power	1.5KW	1.5KW	2.0KW	2.5KW	3.5KW
Air Supply	≥0.5MPa	≥0.5MPa	≥0.5MPa	≥0.5MPa	≥0.5MPa
Environment Requirement	0-40°C 35-85%RH				
Machine Size(L*W*H)	820x850x1600mm	830x1040x1730mm	1130x1330x1700mm	1130x1330x1730mm	1150x1400x1750mm



## 东莞市维希尔科技有限公司

Dongguan Veshay Laser Technology Co., Ltd

TEL: 0769-22117201 FAX: 0769-22117202

Sales Manager: Effie Chang

WeChat/WhatsApp:+86 15322888701

Website: www.vipinforce.com.cn

Address: Room 1201, Unit 1, Building 16, No. 7 Science and Technology Avenue, Houjie Town, Dongguan City, Guangdong Province, China