



VENTUS OGI

CUTTING-EDGE OPTICAL GAS IMAGING CAMERA

Ventus OGI is an industry-leading, integration-ready 640 x 512 resolution MWIR camera core designed to detect and visualize hydrocarbon gases, including methane and propane.

DETAILS

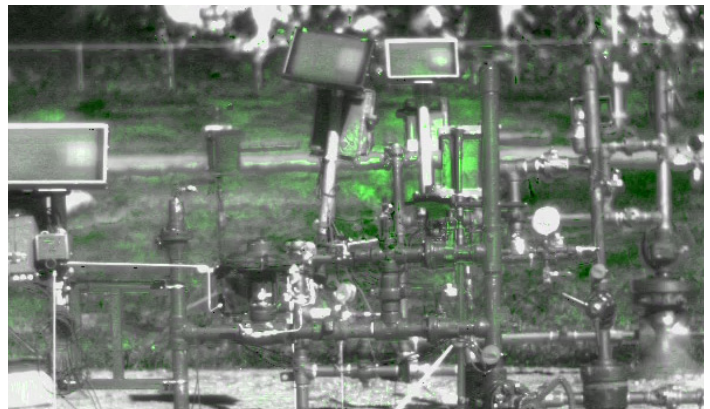
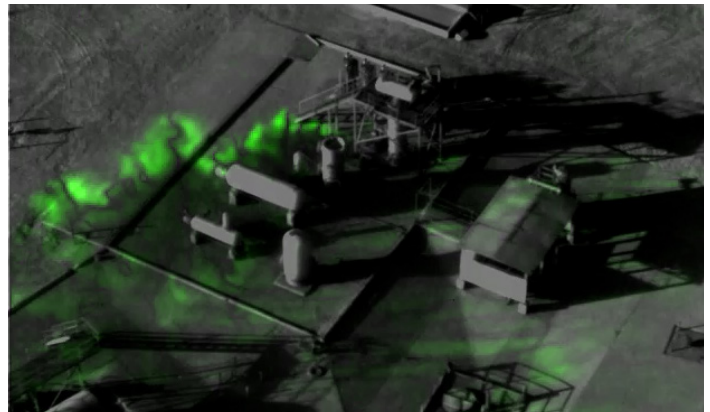
The Ventus OGI (Optical Gas Imaging) camera core brings together the very latest in detector, cooler and lens design. Available in 25 mm and 50 mm lens models, the system is built around a long-life HOT MWIR detector with a special narrow bandpass cold filter in a miniature closed-cycle Stirling cooler with an f/1.5 cold shield. The combination of these state-of-the-art components produces the smallest, lightest and most energy-efficient OGI camera core on the market, making Ventus OGI ideal for systems integration across a wide range of platforms and applications.

The camera is available with a choice of digital and analog inputs/outputs and serial or ethernet camera control. Advanced image processing features include Gas Enhancement Mode, local area processing, dynamic contrast enhancement, noise reduction filter, automatic gain and level control, 2x, 4x and 8x digital zoom, multiple color palettes and multiple calibration tables for different scene conditions.

APPLICATIONS

- + Visualize hydrocarbon gases
- + Quickly survey large areas
- + Aerial/ground systems
- + Around-the-clock surveillance
- + Designed for integrators
- + Image from a safe distance
- + Manned/unmanned systems
- + Meet EPA emissions requirements, reduce fines

- + Long-life HOT MWIR detector
- + 640 x 512 resolution / 15 μ m pixel pitch
- + 25 mm / 50 mm lens models
- + F 1.5 optic; 2x, 4x, 8x digital zoom
- + Gas Enhancement Mode colorizes leaks





VENTUS OGI

CUTTING-EDGE OPTICAL GAS IMAGING CAMERA

EXPORT CLASSIFICATION: DUAL USE

FEATURE SPECS

DETECTOR



| | |
|-------------------|--------------------------|
| Detector Type | High operating temp MWIR |
| Array Format | 640 x 512 |
| Pixel Pitch | 15 Micron |
| Spectral Response | MWIR |
| Frame Rate | 30 Hz |
| NETD | <50 mK |

ENVIRONMENTAL



| | |
|-----------------------|-----------------------------------|
| Power Dissipation | 6W Typical 12W Peak |
| Operating Temperature | -35°C to +65°C |
| Certifications | 25 mm: 0000aCertified (<=60 g/hr) |

SYSTEM



| | |
|--|------------------------------------|
| Analog Video Output | NTSC/PAL |
| Digital Video Output | Uncorrected 14-bit CameraLink® |
| Digital Zoom/Pan | 2x, 4x, 8x |
| Camera Control/Command Interfaces/System Control | Ethernet Serial (RS-422/RS-232) |
| Input Voltage | 12VDC |

LENS MODELS



| | |
|------------------|--|
| F# | 1.5 |
| FOV or H/FOV | 25 mm: 21.7° 50 mm: 11° |
| Size (L x W x H) | 25 mm: 147 x 71 x 73 mm 50 mm: 138 x 71 x 77 mm |
| Weight | 25 mm: 541g 50 mm: 570g |
| Focus | Thread focus |



25 & 50 mm lens models

